



Reno A & E
4655 Aircenter Circle
Reno, NV 89502-5948 USA
Telephone: (775) 826-2020
Fax: (775) 826-9191
Website: www.renoae.com
E-mail: contact@renoae.com



PLB Preformed Loop

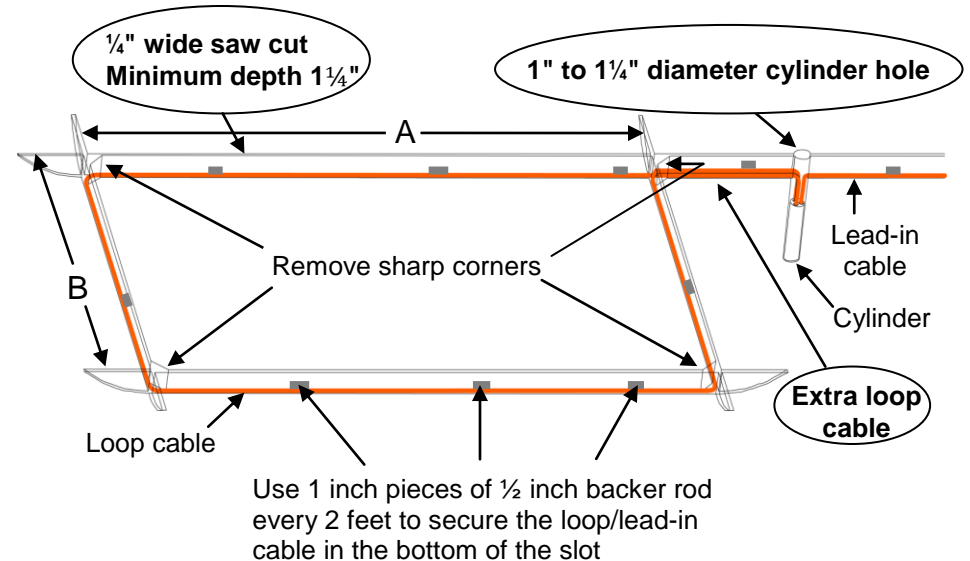
(1/4 inch wide saw cut)

Installation Instructions:

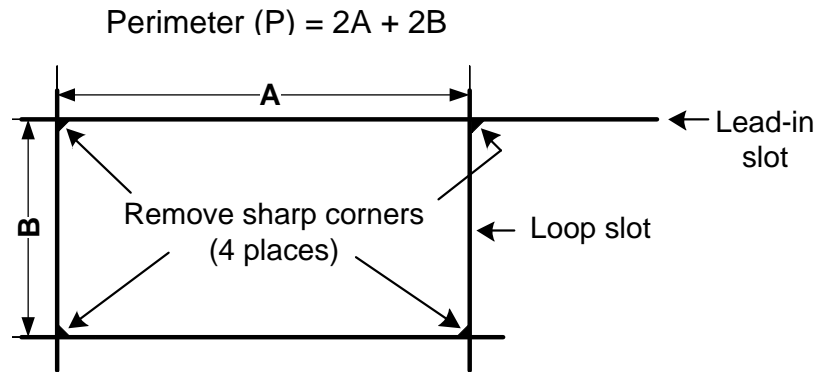
PLB- -
 ↑ ↑
 Lead-in Length (feet)
 Loop Perimeter (feet)

Example: 8 foot x 4 foot Loop with 20 feet of Lead-in cable
Order as: PLB-24-20

$$\text{Perimeter (P)} = 2A + 2B$$



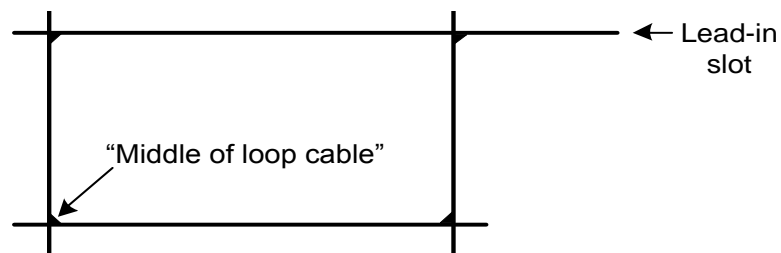
1. Mark the loop and lead-in layout on the pavement.



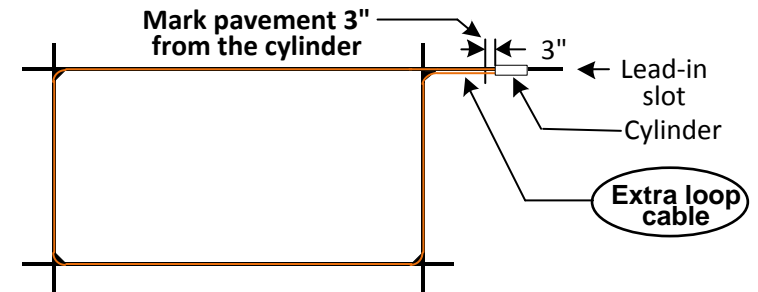
2. Using a ¼ inch saw blade cut the loop and lead-in slots to a minimum depth of 1¼ inch.
3. Remove sharp inside corners.
4. Thoroughly clean the entire length of the slot using compressed air, vacuum, etc. Verify the bottom of the slot is smooth and clean.
5. Hold the loop cable together and find the "middle of loop cable".



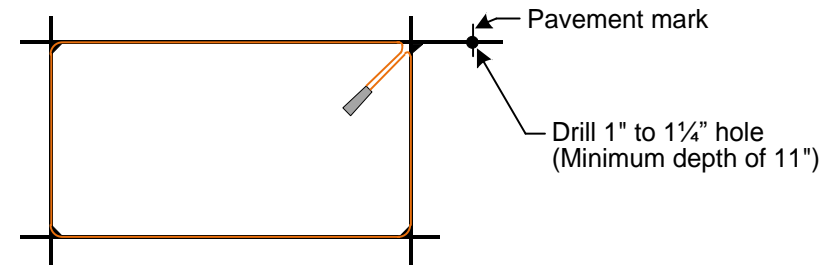
6. Install the "middle of loop cable" into the corner opposite the lead-in location.



7. Install the loop cable in the slot. Use a wood stick or roller to press the loop to the bottom of the slot. **Do not use sharp objects.** Use 1 inch pieces of ½ inch backer rod, as necessary, to hold the cable in the bottom of the slot.
8. Insert the **extra loop cable** in the lead-in slot.
9. Mark pavement 3 inches from the cable end of the cylinder.



10. Pull the cylinder and cable back. Drill a 1 to 1¼ inch hole through the pavement into the soil (prevents water accumulation in the hole).



11. Insert the cylinder in the 1" to 1¼" hole.
12. Install lead-in cable in lead-in slot using pieces of backer rod and a wood stick or roller.
13. Using a proper loop sealant completely fill the entire length of the slot with loop sealant.