

TIGER Drylac®

ral colors

exterior powder coatings



TIGER Drylac®
Powder Coatings



RAL 1000 49/15200
38/15000



RAL 1015 49/15320
38/15015



RAL 1033 49/22240



RAL 2012 49/24690



RAL 3014 49/31080



RAL 4004 49/31020
38/30024



RAL 1001 49/15190
38/15001



RAL 1016 49/22520
38/20016



RAL 1034 49/23910



RAL 3000 49/33120
38/30000



RAL 3015 49/33670



RAL 4005 49/42780



RAL 1002 49/22590
38/20002



RAL 1017 49/22510
38/20017



RAL 1037 49/20096



RAL 3001 49/31120
38/30001



RAL 3016 49/31980
38/30016



RAL 4006 49/32090



RAL 1003 49/22580



RAL 1018 49/21830
38/20018



RAL 2000 49/24570



RAL 3002 49/31110
38/30002



RAL 3017 49/31060



RAL 4007 49/32540
38/30025



RAL 1004 49/22570
38/20004



RAL 1019 49/13660
38/15019



RAL 2001 49/24560
38/23170



RAL 3003 49/31100
38/30003



RAL 3018 49/31050



RAL 4008 49/32280



RAL 1005 49/22560
38/20005



RAL 1020 49/22500
38/20020



RAL 2002 49/24550
38/25002



RAL 3004 49/33900
38/30004



RAL 3020 49/31040
38/30021



RAL 4009 49/34740



RAL 1006 49/22550
38/20006



RAL 1021 49/22280
38/20021



RAL 2003 49/24540



RAL 3005 49/31900
38/30005



RAL 3022 49/33700



RAL 4010 49/40490



RAL 1007 49/22540



RAL 1023 49/22490
38/20023



RAL 2004 49/24530



RAL 3007 49/31910
38/30007



RAL 3027 49/33660



RAL 5000 49/42200
38/40000



RAL 1011 49/15180
38/15011



RAL 1024 49/22480
38/20024



RAL 2008 49/24340



RAL 3009 49/31920
38/30009



RAL 3031 49/34730
38/30031



RAL 5001 49/42210
38/40001



RAL 1012 49/22530
38/20012



RAL 1027 49/22470
38/20027



RAL 2009 49/24360



RAL 3011 49/31090
38/30011



RAL 4001 49/43160



RAL 5002 49/42220
38/40002



RAL 1013 49/11280
38/10013



RAL 1028 49/22460



RAL 2010 49/24520
38/25001



RAL 3012 49/31940
38/30012



RAL 4002 49/31030
38/30008



RAL 5003 49/42230
38/40003



RAL 1014 49/15170
38/15014



RAL 1032 49/22450
38/20032



RAL 2011 49/24580



RAL 3013 49/31950
38/30013



RAL 4003 49/32270



RAL 5004 49/42240
38/40004



RAL 5005 49/43190
38/40010



RAL 5019 49/42360
38/40019



RAL 6006 49/52870
38/50006



RAL 6016 49/51020
38/50016



RAL 6027 49/50990
38/50027



RAL 7006 49/72580
38/70006



RAL 5007 49/42250
38/40007



RAL 5020 49/44270
38/40018



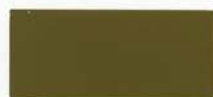
RAL 6007 49/52860
38/50007



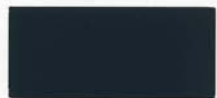
RAL 6017 49/52780
38/50017



RAL 6028 49/52650
38/50028



RAL 7008 49/72570
38/70008



RAL 5008 49/42260
38/40008



RAL 5021 49/41190
38/40021



RAL 6008 49/53240
38/50008



RAL 6018 49/52720
38/50018



RAL 6029 49/52640
38/50029



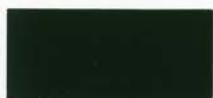
RAL 7009 49/72770
38/70009



RAL 5009 49/42270
38/40009



RAL 5022 49/42390
38/40022



RAL 6009 49/52840
38/50009



RAL 6019 49/51000
38/50019



RAL 6032 49/52630
38/50032



RAL 7010 49/72560
38/70014



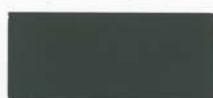
RAL 5010 49/42280
38/40016



RAL 5023 49/44650
38/40023



RAL 6033 49/55010
38/50033



RAL 7011 49/72790
38/70011



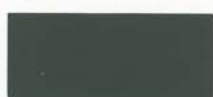
RAL 5011 49/43180
38/40011



RAL 5024 49/44660
38/40024



RAL 6034 49/55020
38/50034



RAL 7012 49/71180
38/70012



RAL 5012 49/43170
38/40012



RAL 6000 49/53160
38/50000



RAL 6010 49/52830
38/50031



RAL 6020 49/52710
38/50020



RAL 7000 49/72700
38/70000



RAL 7013 49/72550
38/70013



RAL 5013 49/42310
38/40013



RAL 6001 49/52900
38/50005



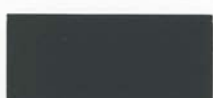
RAL 6011 49/52820
38/50011



RAL 6021 49/52700
38/50021



RAL 7001 49/72710
38/70003



RAL 7015 49/72820
38/70015



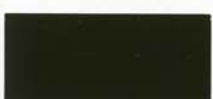
RAL 5014 49/42320
38/40014



RAL 6002 49/52890
38/50023



RAL 6012 49/51540
38/50012



RAL 6022 49/52690
38/50022



RAL 7002 49/72720
38/70007



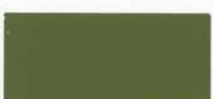
RAL 7016 49/72830
38/70016



RAL 5015 49/42330
38/40015



RAL 6003 49/52880
38/50003



RAL 6013 49/52810
38/50013



RAL 6024 49/52680
38/50024



RAL 7003 49/72600
38/70017



RAL 7021 49/72540
38/70021



RAL 5017 49/40760
38/40017



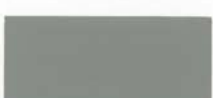
RAL 6004 49/50980
38/50004



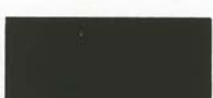
RAL 6014 49/52800
38/50014



RAL 6025 49/52670
38/50025



RAL 7004 49/73300
38/70004



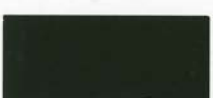
RAL 7022 49/72850
38/70022



RAL 5018 49/41140
38/40020



RAL 6005 49/50670
38/50002



RAL 6015 49/52790
38/50015



RAL 6026 49/52660
38/50026



RAL 7005 49/72590
38/70005



RAL 7023 49/72530
38/70023



RAL 5005 49/43190
38/40010



RAL 5019 49/42360
38/40019



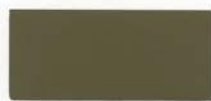
RAL 6006 49/52870
38/50006



RAL 6016 49/51020
38/50016



RAL 6027 49/50990
38/50027



RAL 7006 49/72580
38/70006



RAL 5007 49/42250
38/40007



RAL 5020 49/44270
38/40018



RAL 6007 49/52860
38/50007



RAL 6017 49/52780
38/50017



RAL 6028 49/52650
38/50028



RAL 7008 49/72570
38/70008



RAL 5008 49/42260
38/40008



RAL 5021 49/41190
38/40021



RAL 6008 49/53240
38/50008



RAL 6018 49/52720
38/50018



RAL 6029 49/52640
38/50029



RAL 7009 49/72770
38/70009



RAL 5009 49/42270
38/40009



RAL 5022 49/42390
38/40022



RAL 6009 49/52840
38/50009



RAL 6019 49/51000
38/50019



RAL 6032 49/52630
38/50032



RAL 7010 49/72560
38/70014



RAL 5010 49/42280
38/40016



RAL 5023 49/44650
38/40023



RAL 6033 49/55010
38/50033



RAL 7011 49/72790
38/70011



RAL 5011 49/43180
38/40011



RAL 5024 49/44660
38/40024



RAL 6034 49/55020
38/50034



RAL 7012 49/71180
38/70012



RAL 5012 49/43170
38/40012



RAL 6000 49/53160
38/50000



RAL 6010 49/52830
38/50031



RAL 6020 49/52710
38/50020



RAL 7000 49/72700
38/70000



RAL 7013 49/72550
38/70013



RAL 5013 49/42310
38/40013



RAL 6001 49/52900
38/50005



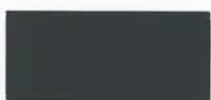
RAL 6011 49/52820
38/50011



RAL 6021 49/52700
38/50021



RAL 7001 49/72710
38/70003



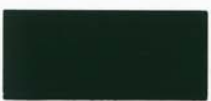
RAL 7015 49/72820
38/70015



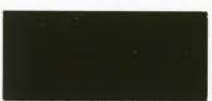
RAL 5014 49/42320
38/40014



RAL 6002 49/52890
38/50023



RAL 6012 49/51540
38/50012



RAL 6022 49/52690
38/50022



RAL 7002 49/72720
38/70007



RAL 7016 49/72830
38/70016



RAL 5015 49/42330
38/40015



RAL 6003 49/52880
38/50003



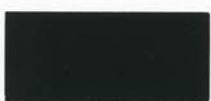
RAL 6013 49/52810
38/50013



RAL 6024 49/52680
38/50024



RAL 7003 49/72600
38/70017



RAL 7021 49/72540
38/70021



RAL 5017 49/40760
38/40017



RAL 6004 49/50980
38/50004



RAL 6014 49/52800
38/50014



RAL 6025 49/52670
38/50025



RAL 7004 49/73300
38/70004



RAL 7022 49/72850
38/70022



RAL 5018 49/41140
38/40020



RAL 6005 49/50670
38/50002



RAL 6015 49/52790
38/50015



RAL 6026 49/52660
38/50026

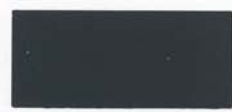


RAL 7005 49/72590
38/70005



RAL 7023 49/72530
38/70023

exterior



RAL 7024 49/72870
38/70024



RAL 7040 49/75470
38/70046



RAL 8007 49/66120
38/60007



RAL 8025 49/66050
38/60025



RAL 7026 49/72880
38/70026



RAL 7042 49/73250
38/70042



RAL 8008 49/66110
38/60008



RAL 8028 49/66500
38/60028



RAL 7030 49/72890
38/70027



RAL 7043 49/72460
38/70043



RAL 8011 49/66100
38/60011



RAL 9001 49/10016
38/10001



RAL 7031 49/72520
38/70031



RAL 7044 49/75480
38/70044



RAL 8012 49/66090
38/60012



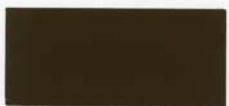
RAL 9002 49/70520
38/10002



RAL 7032 49/72910
38/70001



RAL 7045 49/77890
38/70045



RAL 8014 49/65230
38/60010



RAL 9003 49/11400
38/10003



RAL 7033 49/72510
38/70033



RAL 7046 49/72010
38/70002



RAL 8015 49/63040
38/60015



RAL 9004 49/81950
38/80004



RAL 7034 49/72500
38/70034



RAL 7047 49/72020
38/70047



RAL 8016 49/66080
38/60016



RAL 9005 49/82830
38/80010



RAL 7035 49/73510
38/70035



RAL 8000 49/66170
38/60000



RAL 8017 49/65220
38/60017



RAL 9010 49/11500
38/10004



RAL 7036 49/72950
38/70036



RAL 8001 49/66160
38/60005



RAL 8019 49/65490
38/60019



RAL 9011 49/80540
38/80001



RAL 7037 49/72480
38/70037



RAL 8002 49/66150
38/60002



RAL 8022 49/63080
38/60022



RAL 9016 49/11340
38/10010



RAL 7038 49/72470
38/70038



RAL 8003 49/66140
38/60003



RAL 8023 49/66070
38/60023



RAL 9017 49/80550
38/80017



RAL 7039 49/71020
38/70039



RAL 8004 49/66130
38/60004



RAL 8024 49/66060
38/60024



RAL 9018 49/72490
38/10018

series 49

Weather Resistant TGIC Polyester Powder Coatings for Exterior and Interior Applications

Features: Good weather resistance, good mechanical properties, very smooth flow, good storage stability, good coverage

Gloss Level: All colors featured in this chart are available as standard products in smooth glossy with a gloss level of 80-90+ (gloss level according to Garner 60 deg., ASTM D 523).

Typical Applications: Residential windows and doors, garden equipment, patio furniture, automotive accessories, bicycles, motorcycles, sporting goods.

Standard Packaging: 55 lb boxes or 5 lb mini packs

Datasheets: Periodically updated datasheets, showing cure parameters, test results, pre-treatment information and more are available for all products in this chart. Please contact your local TIGER Drylac office or visit www.tigerdrylac.com for the most current edition.



All Series 49 (custom and stock) products, made in the US or Canada are periodically re-certified and carry the UL (Underwriter Laboratories) Recognized Component mark. This UL mark is for all equipment and products intended for the US and Canadian market.

series 38

A Highly Weather and UV-Resistant Powder Coatings based on Super Durable TGIC Polyester for Exterior and Interior Applications

Features: Superior gloss and color retention, excellent weather resistance, good mechanical properties, superior chalk resistance, smooth flow, excellent edge coverage, good storage stability. AAMA 2604-05 conforming. Under certain conditions TIGER Drylac will offer a 5-year warranty for Series 38.

Gloss Level: All colors featured in this chart are available as standard products in smooth glossy with a gloss level of 80-90 (gloss level according to Gardner 60 deg., ASTM D 523).

Typical Applications: Agricultural and construction equipment, bus shelters, lighting fixtures, playground equipment, site furnishings, garage doors, stadium seating, fencing, automotive equipment, and marine applications.

Standard Packaging: 44 lb boxes and 5 lb mini packs

Datasheets: Periodically updated datasheets, showing cure parameters, test results, pre-treatment information and more are available for all products in this chart. Please contact your local TIGER Drylac office or visit www.tigerdrylac.com for the most current edition.

RAL colors not available: Due to pigmentation a small percentage of colors in the yellow, orange, red and purple range offer only limited UV stability and are therefore not available.

More standard Series 38 products: For additional architectural mattes, glossy and metallic products please see our Series 38 Super Durable Powder Coatings brochure.

Custom colors: Custom colors not shown in this brochure can be custom made in 7 to 10 days. Due to pigmentation some colors in the yellow, orange, red and purple range offer only limited UV stability. UV stability of custom colors in that color range must be verified by our production laboratories on a case by case basis.

TIGER Drylac continues to offer the largest product selection in the powder coating industry. For additional standard products and innovative powder coating solutions please see our numerous other brochures including:

TIGER Drylac Metallic

TIGER Drylac Special Effect

TIGER Drylac Specialties

TIGER Drylac Series 38 Super Durable

TIGER Drylac Anti-Graffiti

TIGER Drylac Series 28 Super Durable
(for approved applicators only)

TIGER Drylac Series 75 Fluoropolymer
(for approved applicators only)

TIGER Drylac Wood

Specifying TIGER Drylac products

In order to eliminate possible errors in specifying our products, we recommend using the full product number rather than specifying the RAL number only. This product number not only describes the Series/Chemistry, but also the exact color, finish and sheen.

Please check with your local TIGER Drylac office or representative for assistance with specifications and suitability issues.

Product Code Matrix

3 8 / 3 0 0 2 5



Chemistry

- 09 Polyester/Epoxy Hybrid
- 16 Acrylic Hybrid
- 28 Super Durable Polyester TGIC (for approved applicators only)
- 39 Polyester TGIC
- 44 Polyurethane
- 49 Polyester TGIC
- 59 Polyester TGIC-Free
- 69 Epoxy
- 75 Fluoropolymer (for approved applicators only)
- 89 Polyester/Epoxy Hybrid, Low/Fast Cure

Color Group (starting with)

- 1 White
- 2 Yellow / Orange
- 3 Red
- 4 Blue
- 5 Green
- 6 Brown
- 7 Grey
- 8 Black
- 9 Metallic

offices and warehouses

West Coast 1261 E. Belmont Street
Ontario, CA 91761
Phone: (909) 930-9100
Fax: (909) 930-9111
customerservicewest@tigerdrylac.com

Northwest 18808 142nd Avenue N.E., Suite 5B
Woodinville, WA 98072
Phone: (425) 481-3160
Fax: (425) 481-1136
customerservicenw@tigerdrylac.com

Midwest 3855 Swenson Avenue
St. Charles, IL 60174
Phone: (630) 513-9999
Fax: (630) 513-9998
customerservicemw@tigerdrylac.com

East Coast 1100 Commons Blvd.
Reading, PA 19605
Phone: (610) 926-8148
Fax: (610) 926-8149
customerserviceeast@tigerdrylac.com

Southeast 3400 Town Pt. Drive NW, Suite 140
Kennesaw, GA 30144
Phone: (770) 218-2490
Fax: (770) 218-2495
customerservicese@tigerdrylac.com

South 339 Exchange Drive
Arlington, TX 76011
Phone: (817) 277-7995
Fax: (817) 277-1931
customerservicesouth@tigerdrylac.com



RAL: Having gained worldwide acceptance over the last few decades, the RAL is the most popular Central European Color Standard used today.

The RAL colors in this chart have been matched as closely as possible. Color chart production methods and influence from heat and light may account for slight color deviation from the actual RAL Standard. This chart therefore can not serve as a standard for RAL color production and is to be used as a guide for color planning and specification only.

To aid in final product selection please contact your regional Tiger Drylac location for a powder coated Q-Panel of the product of your choice.



Member of the
Powder Coating Institute



3/06 • 2003/N

www.tigerdrylac.com